

The background of the slide is a stylized map of a city street network. The streets are represented by red lines of varying thicknesses, set against a light gray background. The map shows a complex grid of streets with some irregularities, suggesting an urban environment. The lines are clean and minimalist, focusing on the layout of the roads.

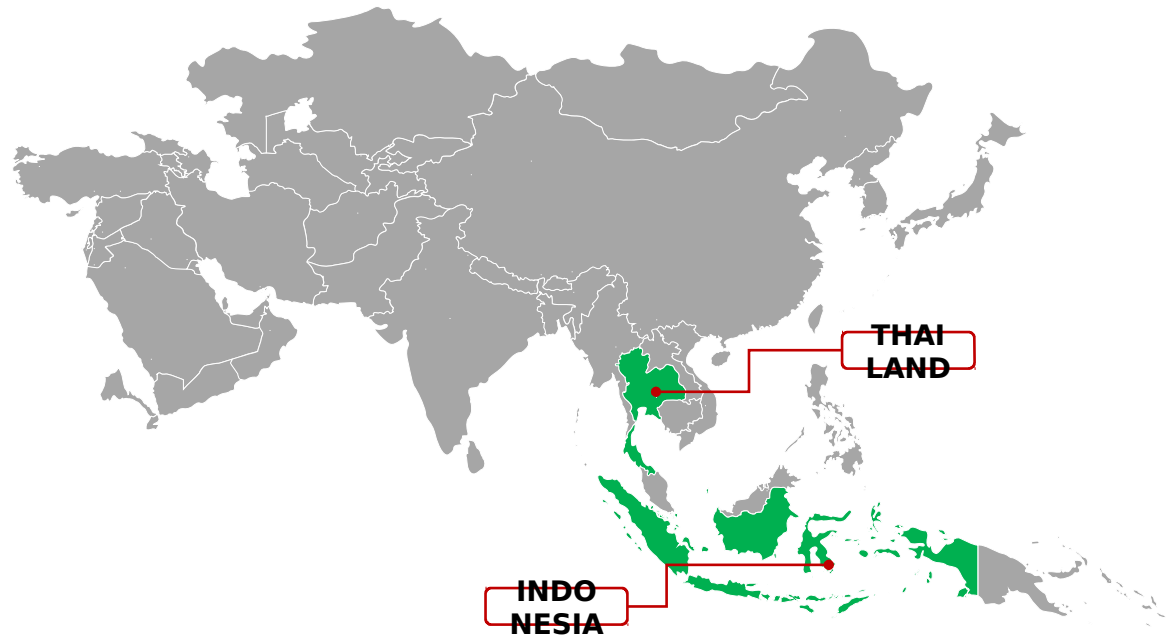
# Indonesia Road Mapping

Wulansari Khairunisa  
Humanitarian OpenStreetMap Team Indonesia

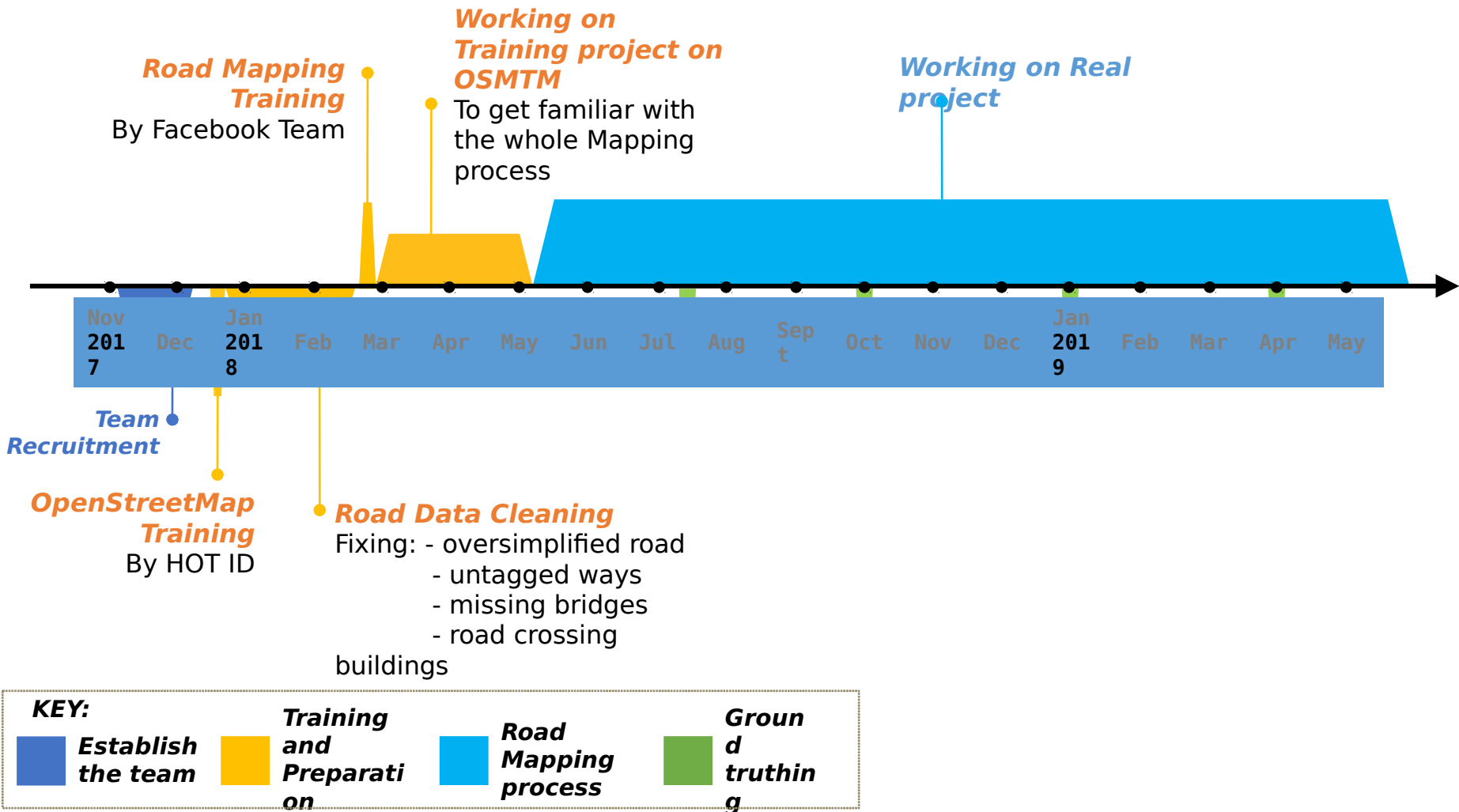
# Partnership



OpenStreetMap  
Indonesia



# Timelines



# Current progress (by July 2018)

1.912.081

Submitted nodes,

65.096

Submitted ways,

28.857 km

Length of Submitted ways,

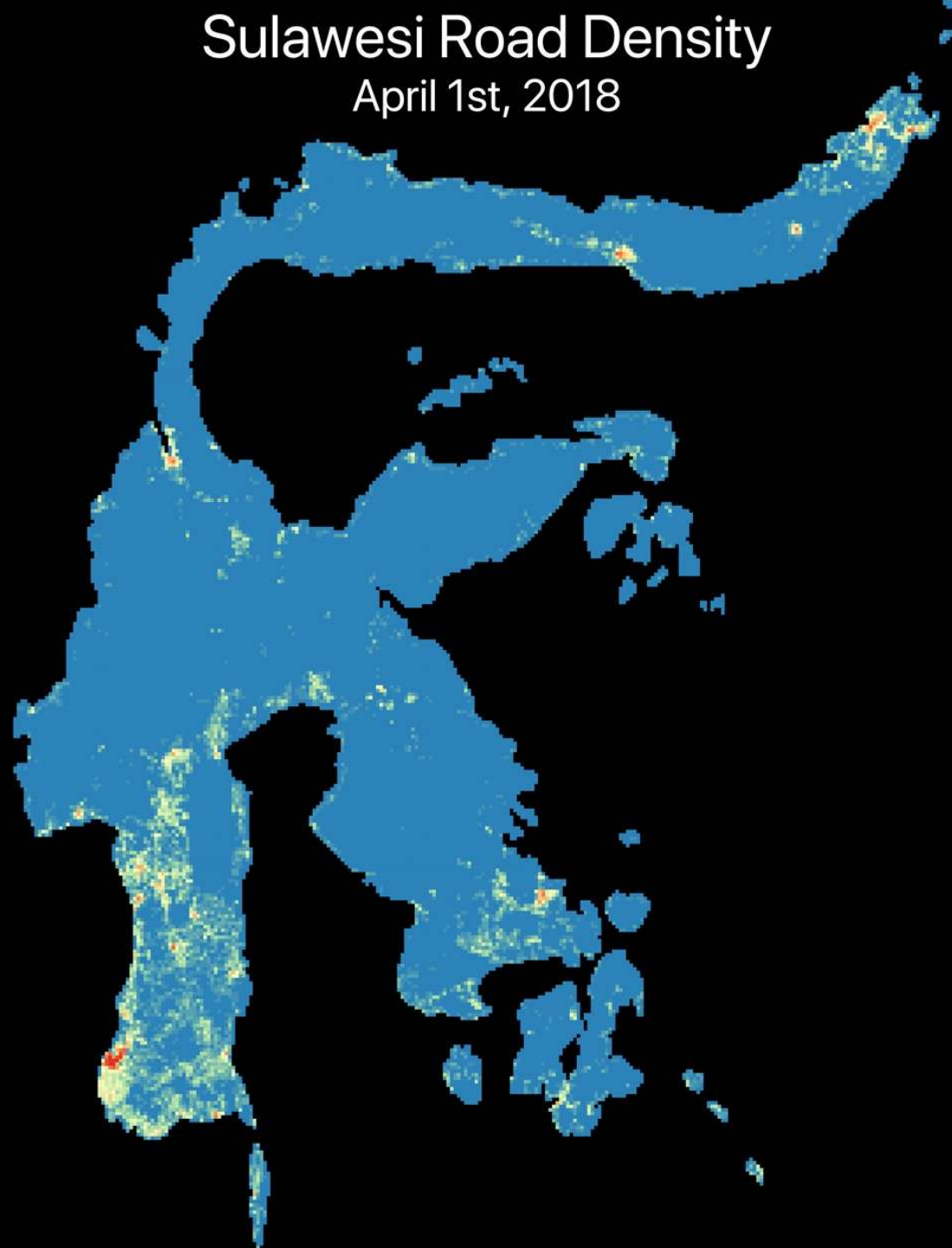
6 of 34

Provinces.



# Sulawesi Road Density

April 1st, 2018



## Legend

Road Counts

1 - 10
10 - 26
26 - 51
51 - 90
90 - 148
148 - 208
208 - 364
364 - 547
547 - 1163
1163 - 1494

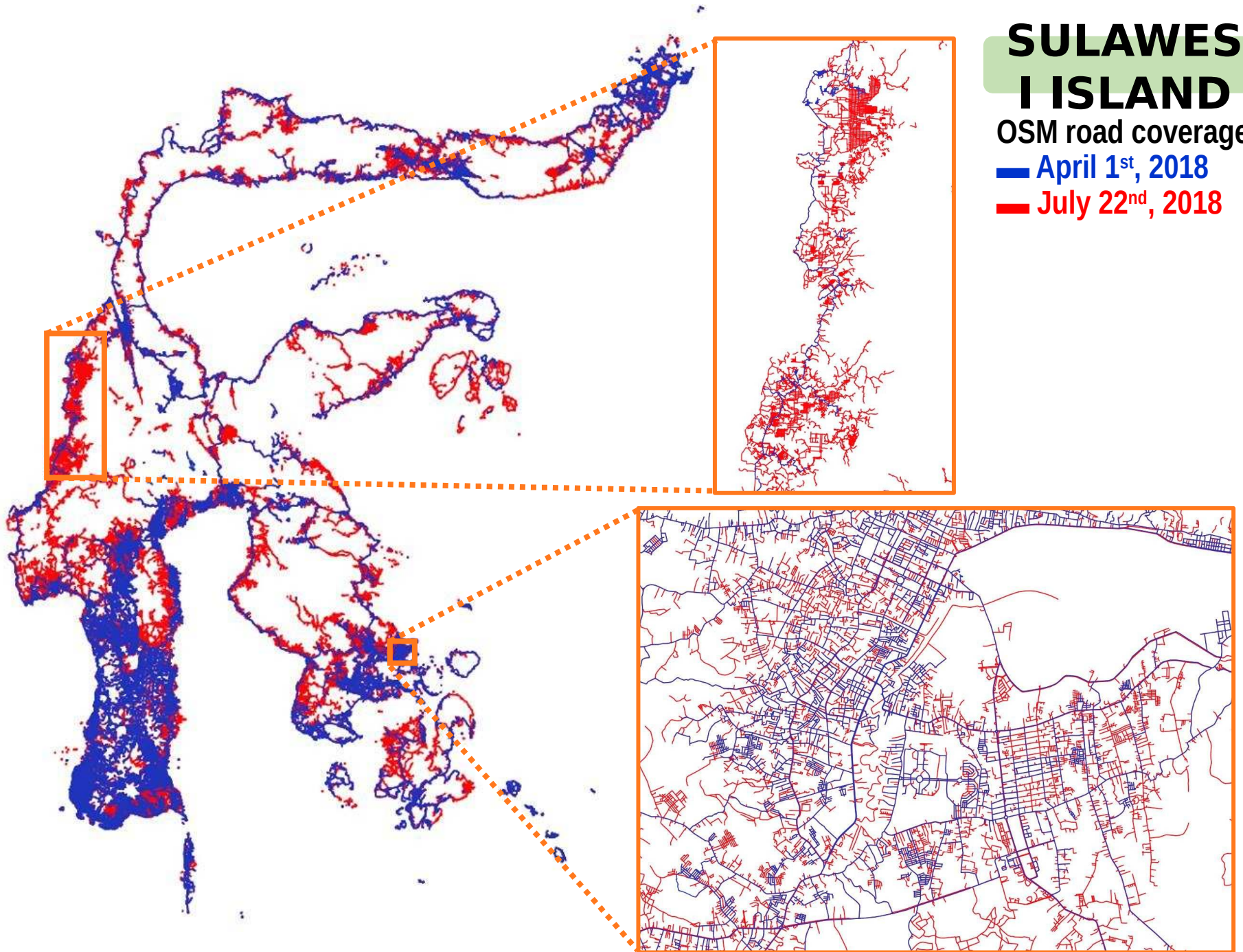


# SULAWES I ISLAND

OSM road coverage

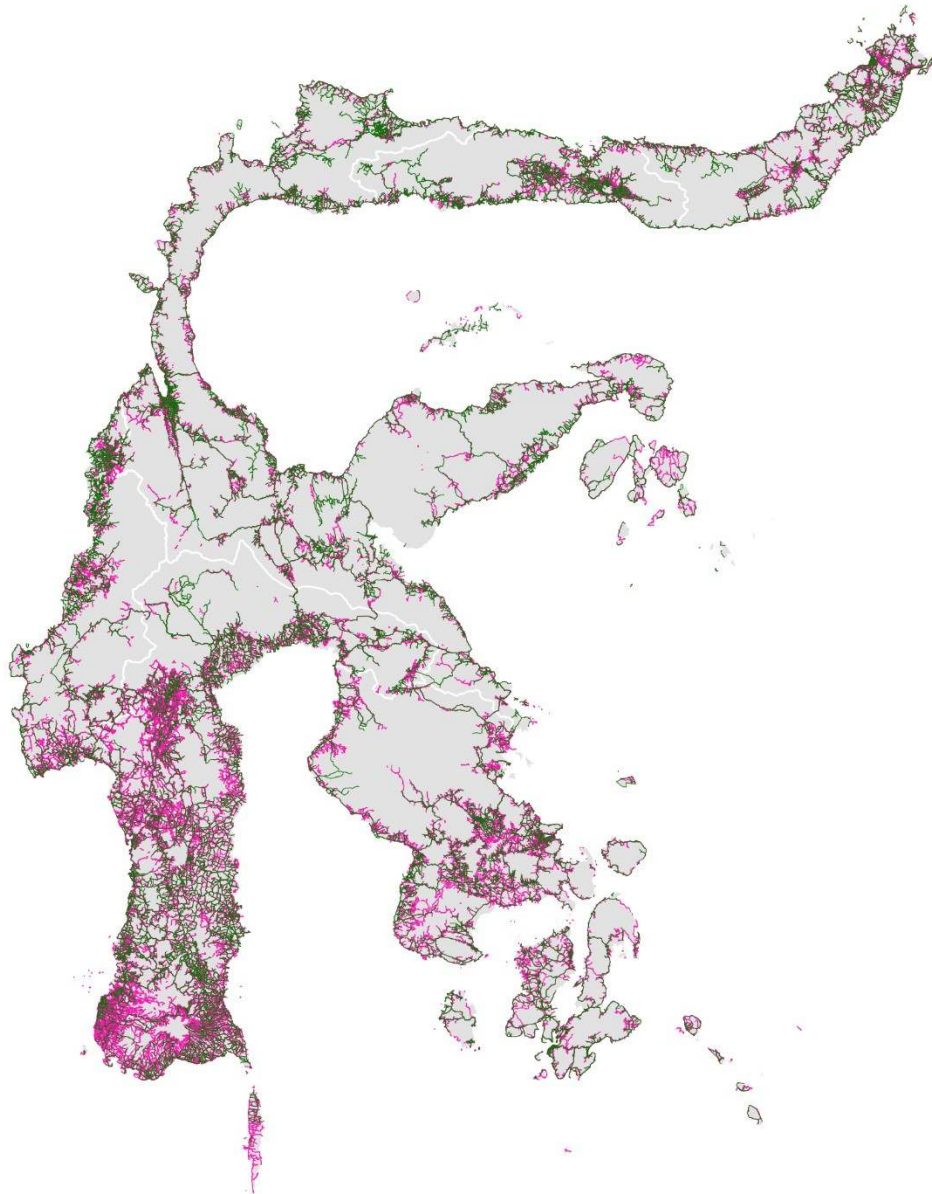
— April 1<sup>st</sup>, 2018

— July 22<sup>nd</sup>, 2018



# MAP COMPARISON

SULAWESI  
ISLAND

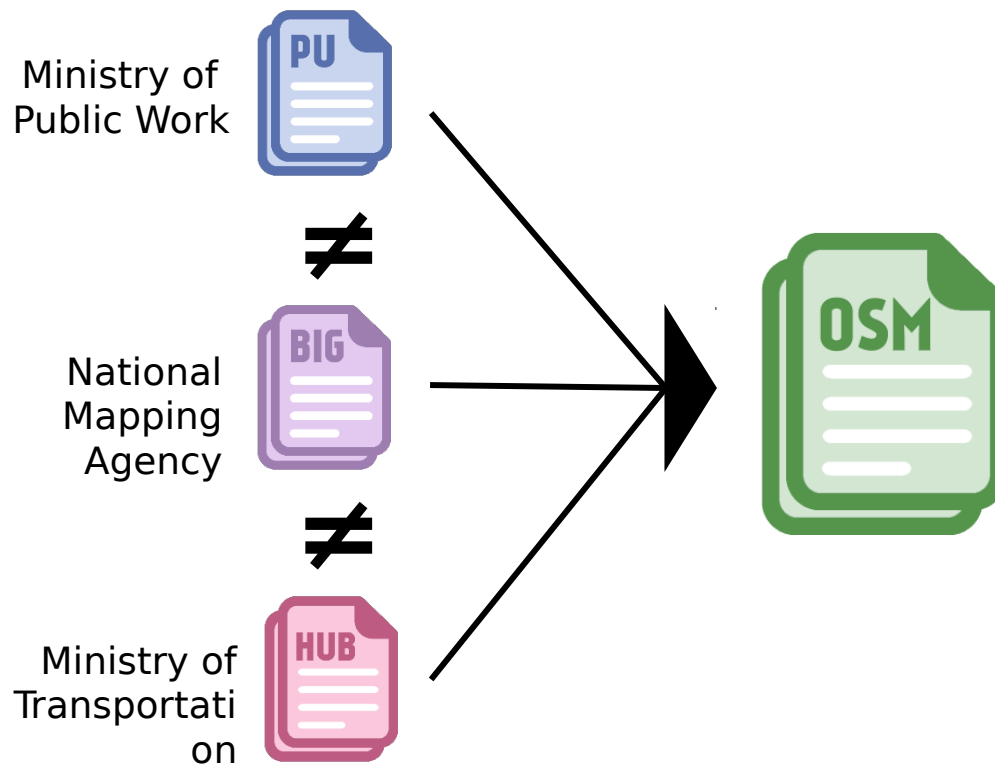


— National Mapping Agency

— OpenStreetMap

# Challenges

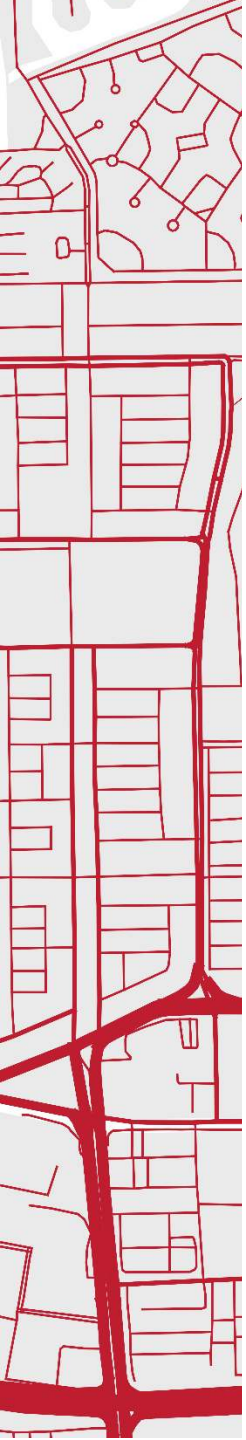
- Determining road classification
  - Differences in road classification standards from 3 authorized national institutions.





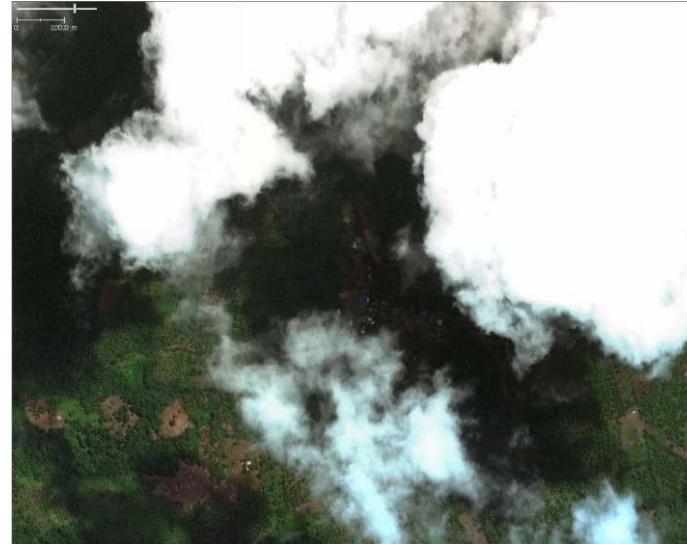
# Challenges

- Determining road classification
  - Differences in road classification standards from 3 authorized national institutions.
  - Indonesia as maritime country which has different road characteristic in each islands.



# Challenges

- Quality of the satellite image





# Opportunities

- More contribution / collaboration from local people

## TRAINING & Discuss

Two local universities in South Sulawesi

1. HASANUDDIN UNIVERSITY - Civil Engineering
2. STATE UNIV. OF SOUTH SULAWESI - Geography



# Opportunities

- More contribution / collaboration from local people

## GROUND TRUTHING



The frequently found objects that are hard to identify from satellite imagery :

- Small bridges
- Disconnected roads because of seasonal floods or waterway
- Building above the



- Small bridges





- Disconnected roads because of seasonal river or floods



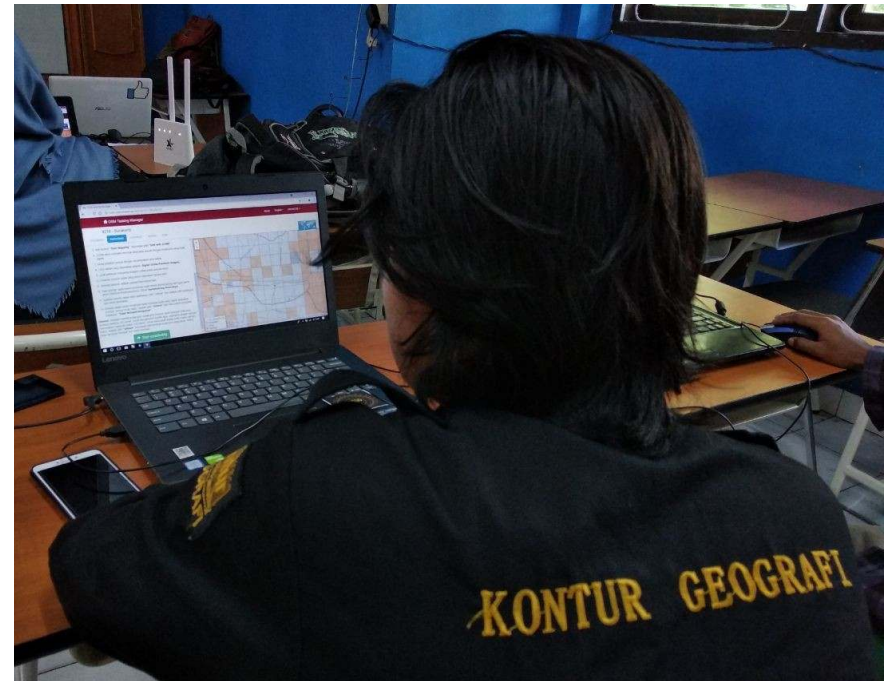
- Building above the street





# Opportunities

- Increase the use of OSM data in various fields







# Opportunities

- OSM can be the solution for these **problem in Indonesia:**
  - Low awareness to spatial data
  - Spatial data is not up-to-date
  - Spatial data is not free, required high cost

# The Team

