

ohsome



Comprehensive OpenStreetMap History Data Analyses - for and with the OSM community

Michael Auer, Melanie Eckle, Sascha Fendrich, Fabian Kowatsch, Sabrina Marx, Martin Raifer, Moritz Schott, Rafael Troilo, Alexander Zipf



ohsome ?

1. OhSoMe: OpenStreetMap
2. OHsome: OpenStreetMap History (something)
3. Ohsome: sounds just „awesome“



Workshop NEXT SESSION!

Exploring OSM's history
using the "ohsome" data analysis platform

14:00h

S.1.5

ohsome

**openroute
service**

**Big Spatial
Data
Analytics**

**Disaster and
humanitarian
management**

OSM History Data Analysis

- What can we learn from the History?

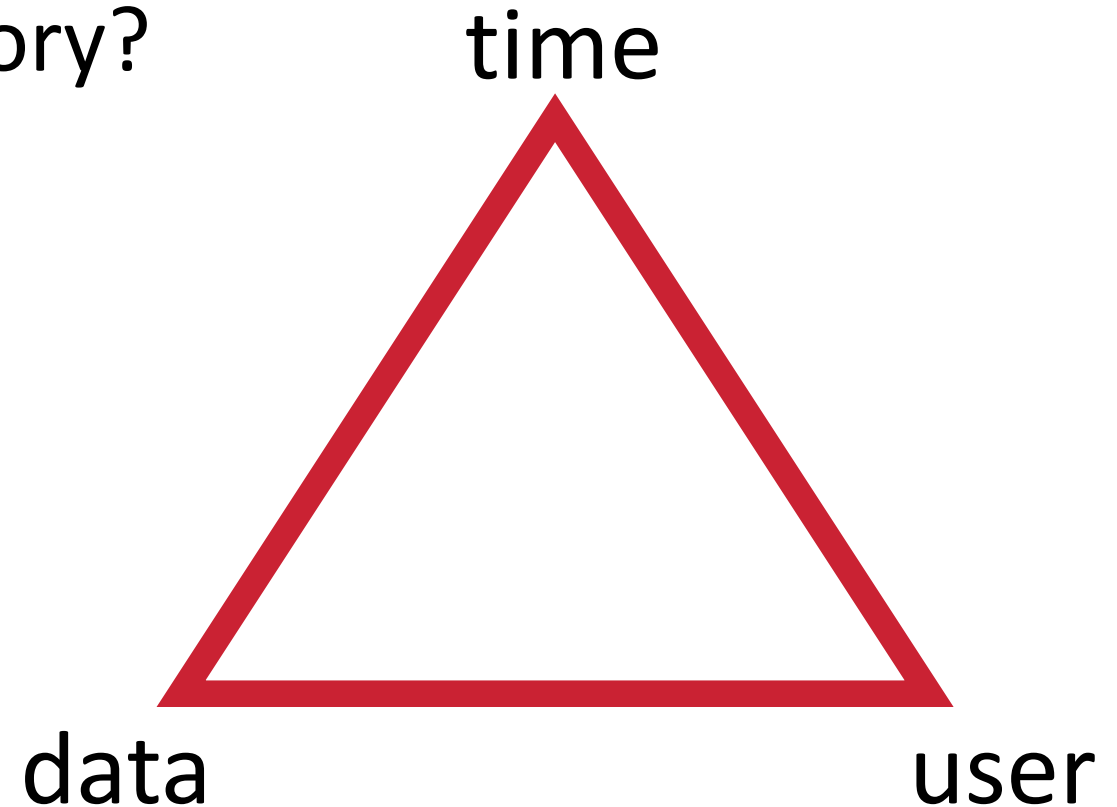
- Development of the data

→ **DATA QUALITY**

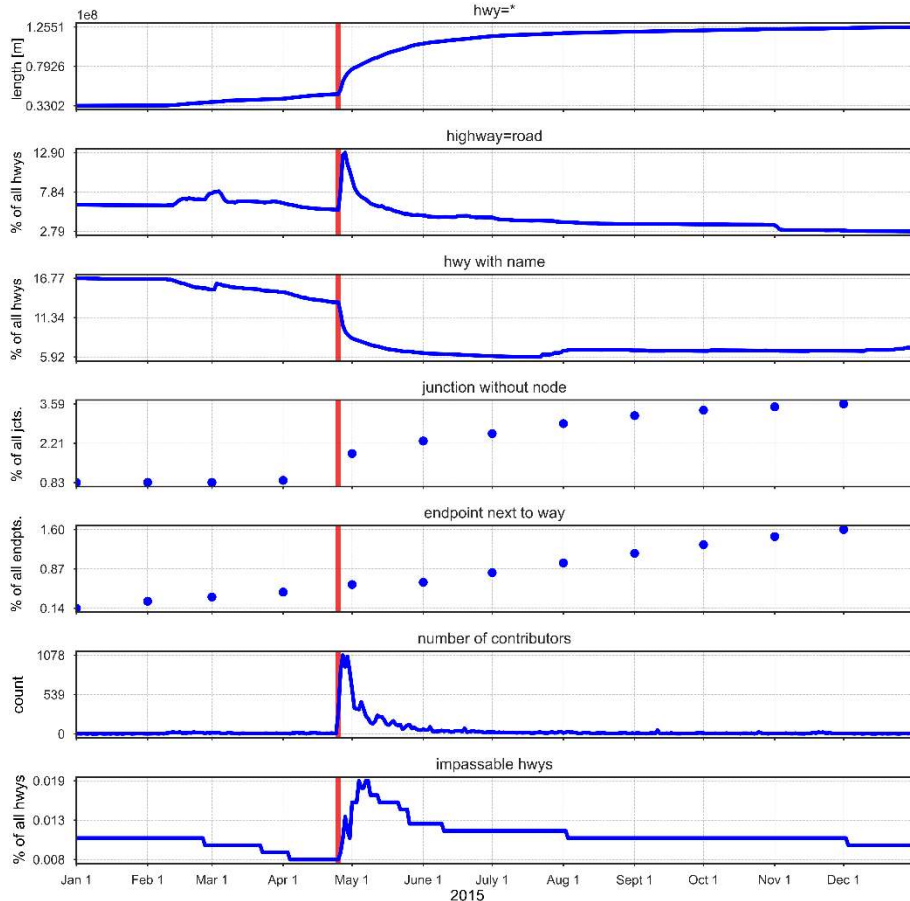
- Development of the users

- Development of spatial/thematic
(sub-)communities

→ **COMMUNITY DYNAMICS**



- The Challenge?
 - Make the whole data treasure available to the public
 - Queries of arbitrary temporal and spatial resolution
 - No pre-filtering / no clean-up
 - BIG DATA
 - High performance (parallel and distributed)
 - Flexible (run it on local PC or on computing cluster)
 - Usability (Easy to use for different target groups)
 - Different API Levels

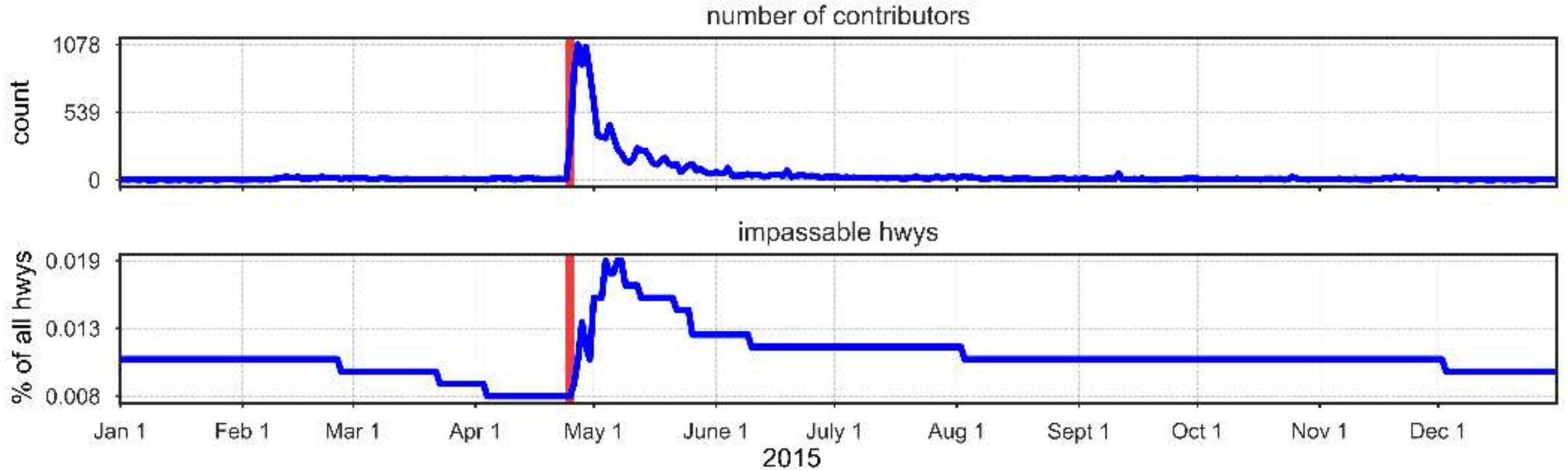


Auer, M., Eckle, M, Fendrich, S., Griesbaum, L., Kowatsch, F., Marx, S., Raifer, M., Schott, M., Troilo, R. & Zipf, A. (2018):

Towards Using the Potential of OpenStreetMap History for Disaster Activation Monitoring

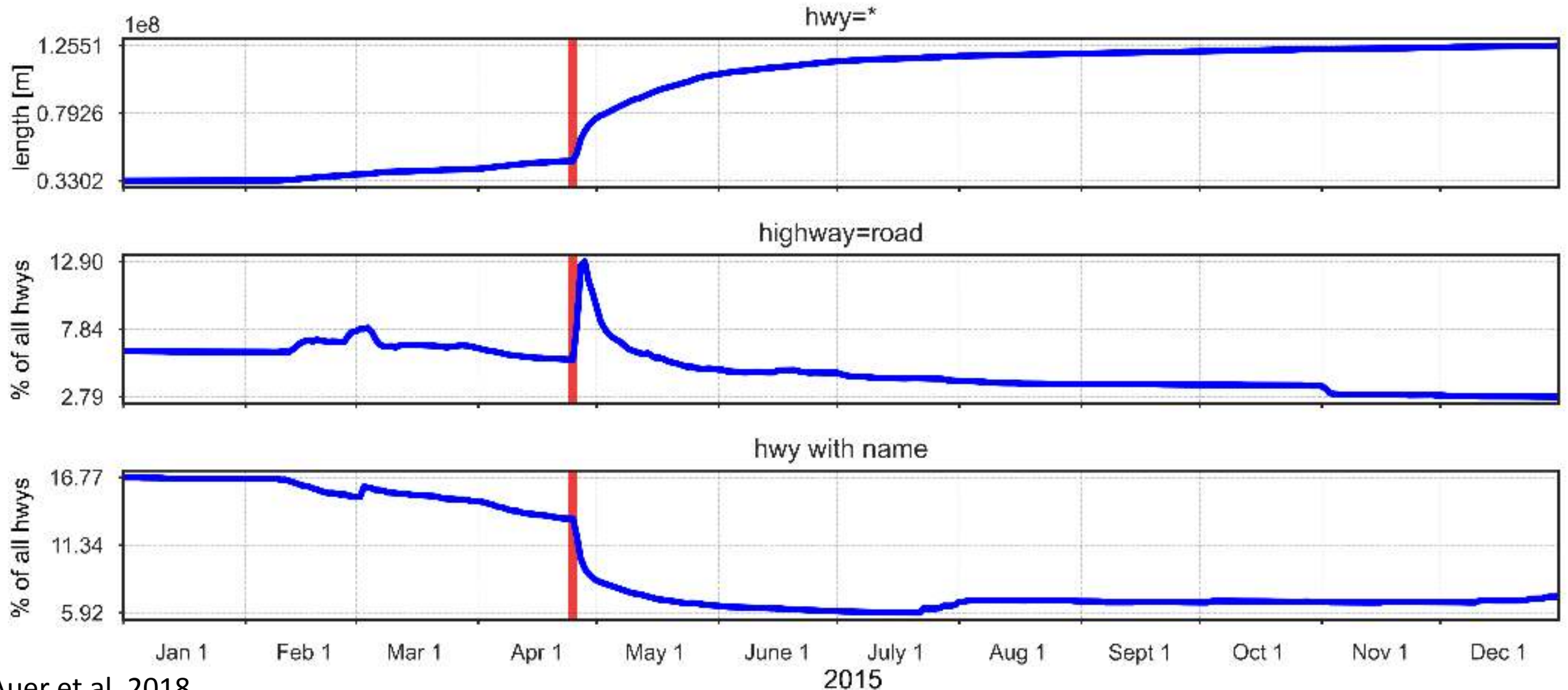
Proceedings of the 15th ISCRAM Conference – Rochester, NY, USA May 2018

Examples: Data Quality



Auer et al. 2018

Examples: Data Quality



Auer et al. 2018

29.07.2018



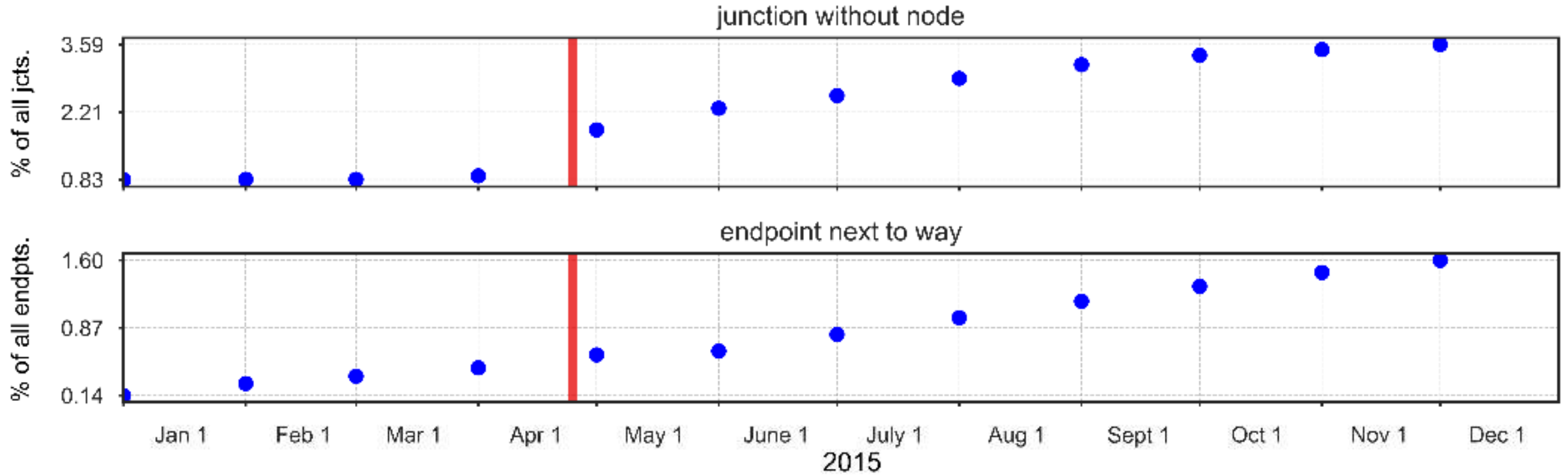
UNIVERSITÄT
HEIDELBERG
ZUKUNFT
SEIT 1386



Klaus Tschira Stiftung
gemeinnützige GmbH

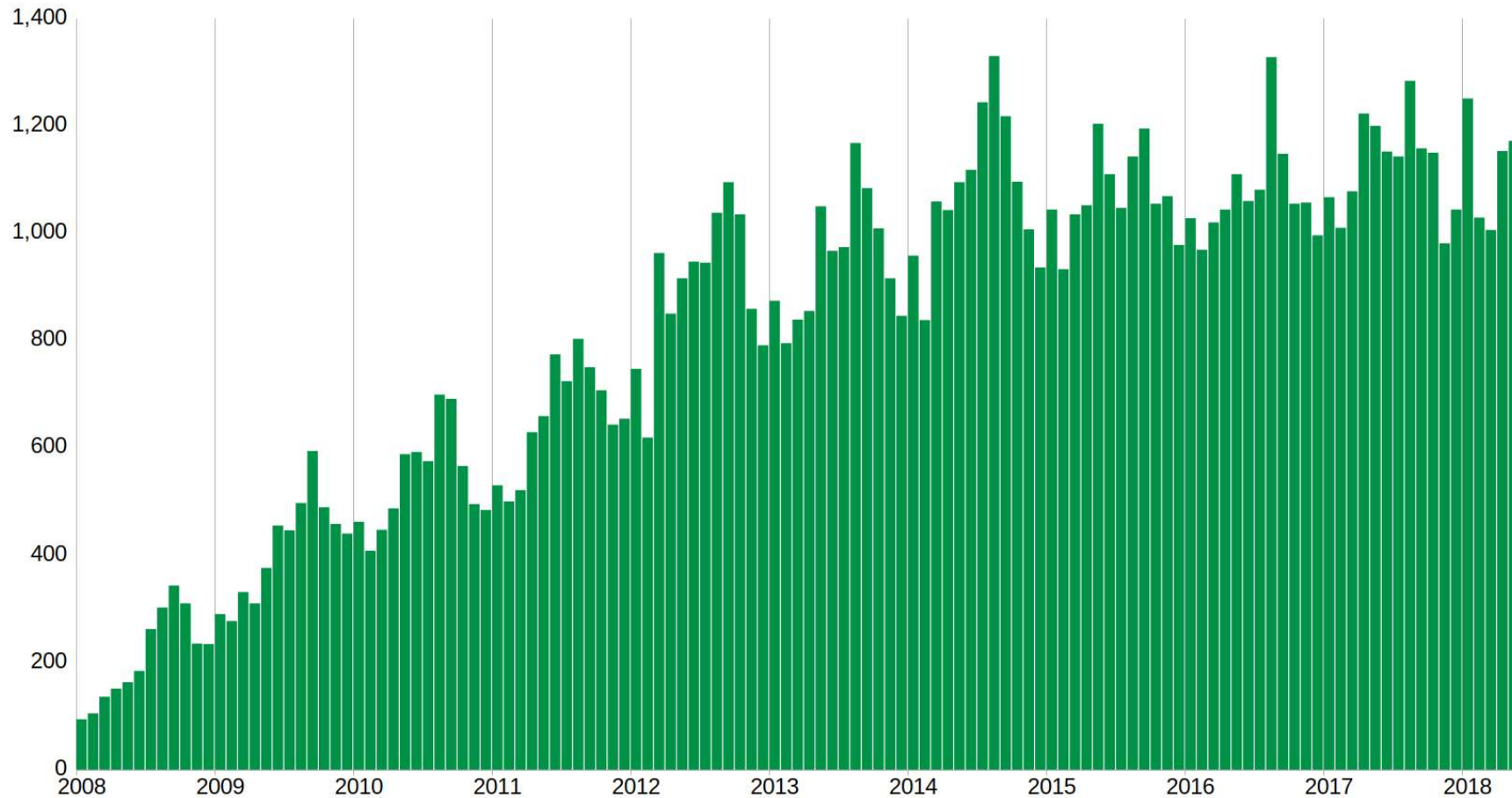


Examples: Data Quality



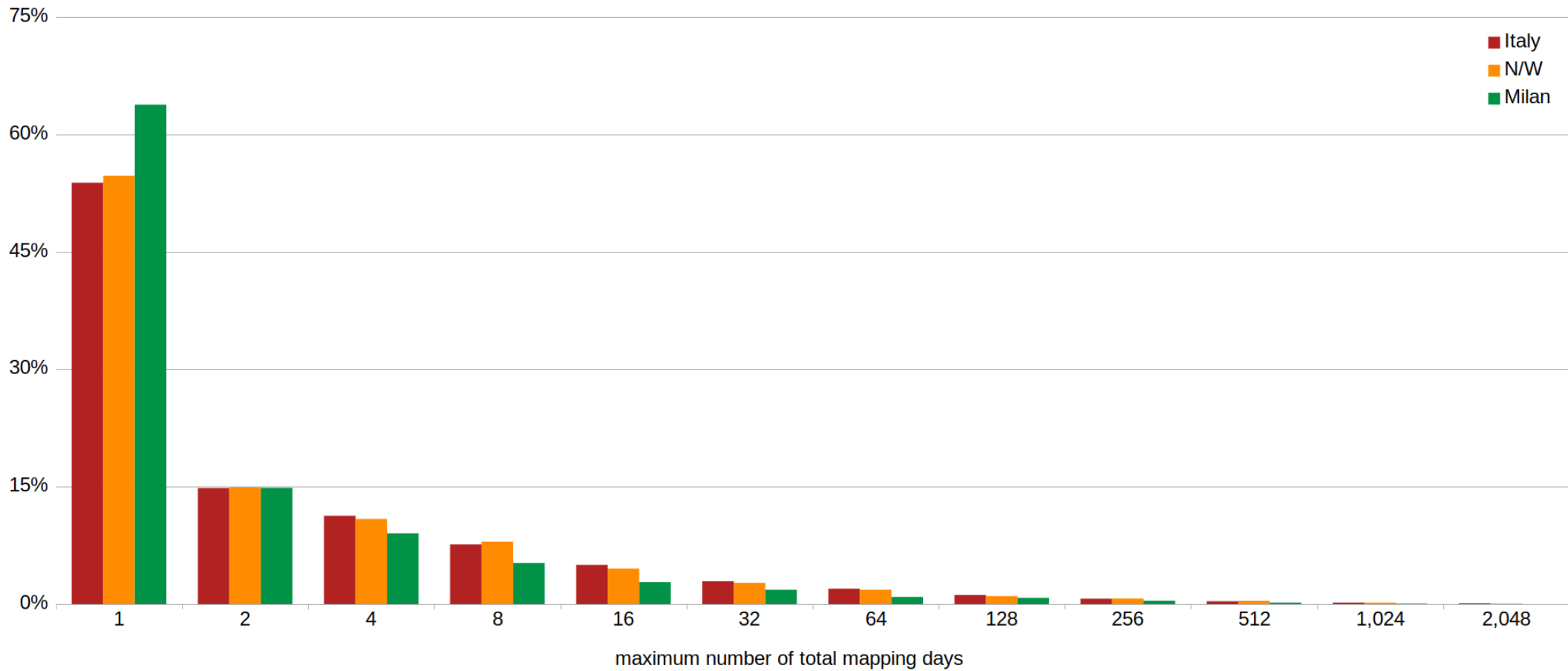
Auer et al. 2018

Unique Mappers Editing Highways per Month



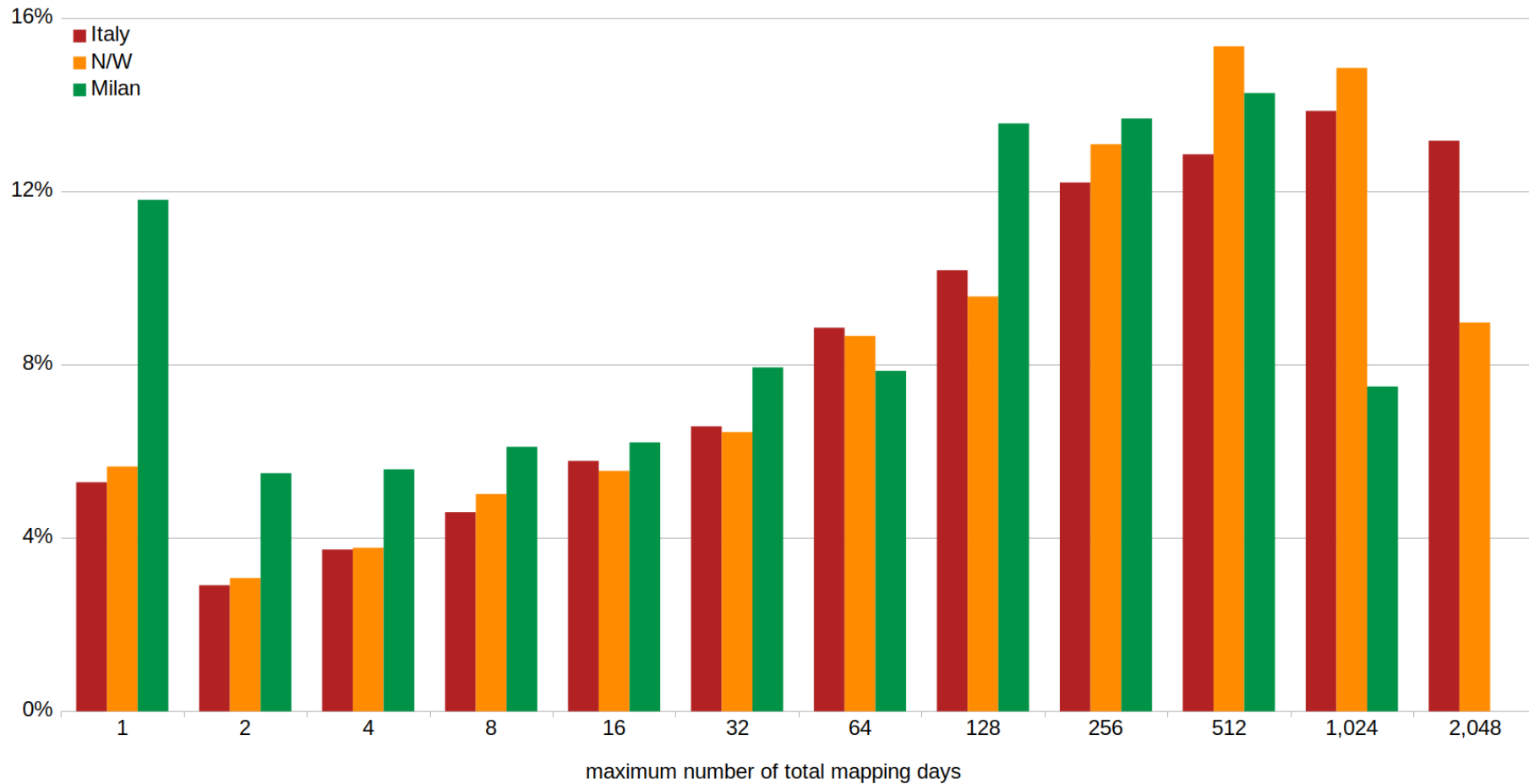
Examples: Community Dynamics

Relative Size of Mapper Groups

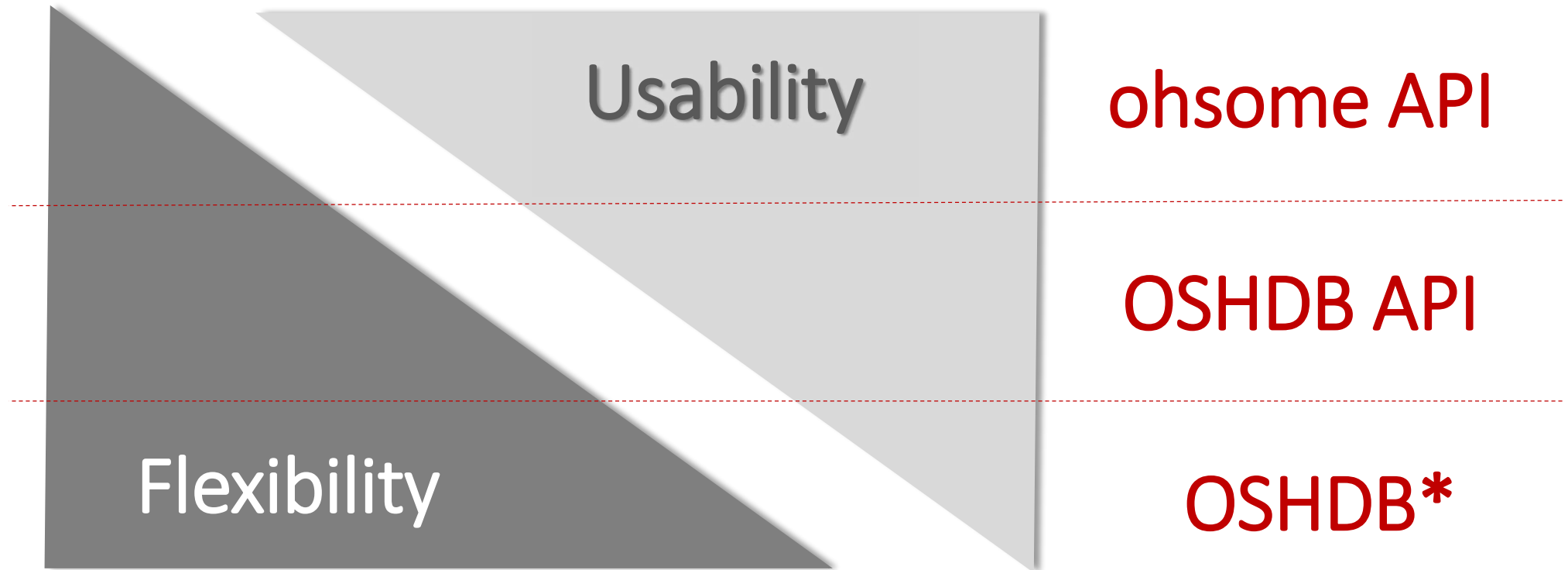


Examples: Community Dynamics

Normalized Mapping Days by Mapper Groups



Can I use it?



* OSHDB = OpenStreetmap History Database

Can I use it?

- OSHDB API: Current version 0.4 available on Github
<https://github.com/giscience/oshdb>

- ohsome API: <https://api.ohsome.org>
(global coverage coming soon!)

- KLL Nepal Dashboard

Workshop NOW!
14:00h **S.1.5**

```
OSHDBH2 db = new OSHDBH2("./data/oshdb/italy.oshdb");
```

```
SortedMap<OSHDBTimestamp, Number> result = OSMEntitySnapshotView.on(db)  
    .timestamps("2008-01-01", "2018-01-01", Interval.MONTHLY)  
    .areaOfInterest(new OSHDBBoundingBox(9.1308, 45.4239, 9.263, 45.5022))  
    .osmTag("highway")  
    .osmType(OSMType.WAY)  
    .aggregateByTimestamp()  
    .map(snapshot -> Geo.lengthOf(snapshot.getGeometry()))  
    .sum();
```

```
result.forEach((timestamp, value) ->  
    System.out.println(timestamp + "\t" + value)  
);
```


<https://api.ohsome.org>

Web API documentation with example requests

Webapp using ohsome API: Nepal-Dashboard

OSM tag filter

Key: Value (leave blank to query all values):

compare with impassable roads

Measure

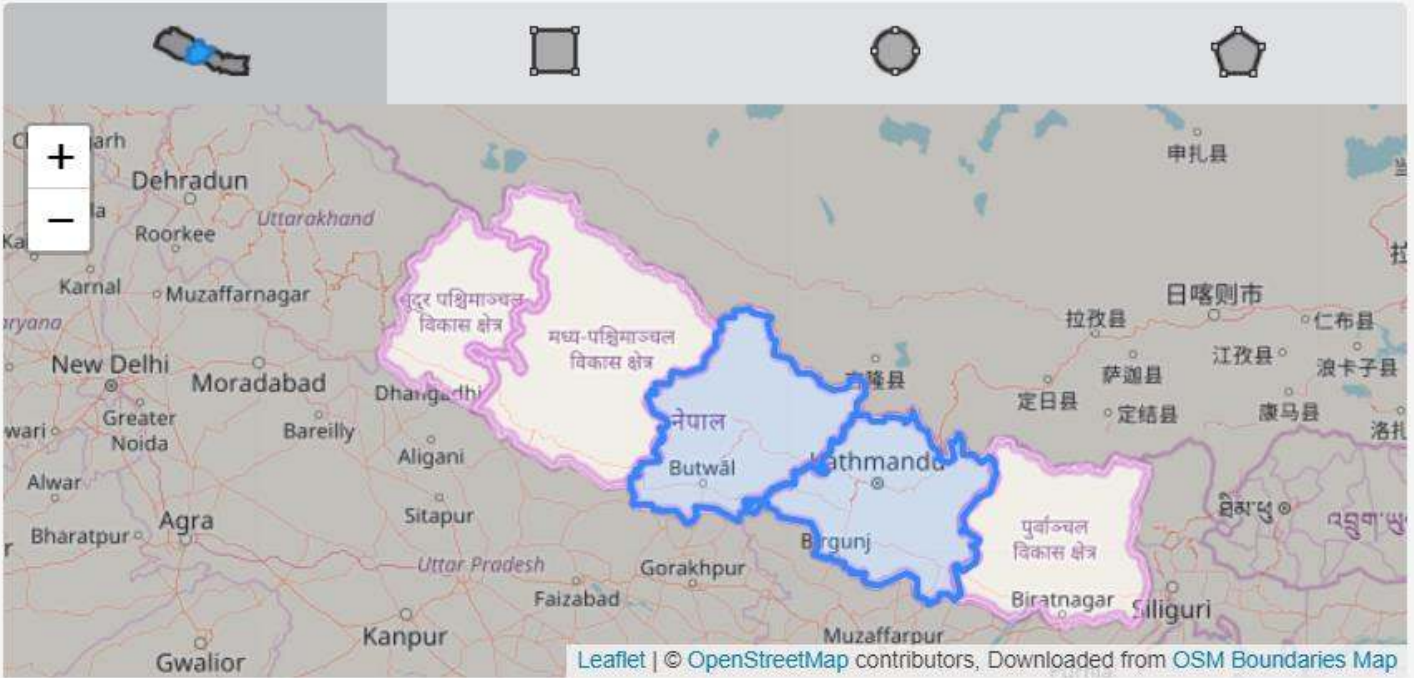
count
 length*
 area
 perimeter

* recommended for selected tag

Time period

Start:
 End:
 Interval:

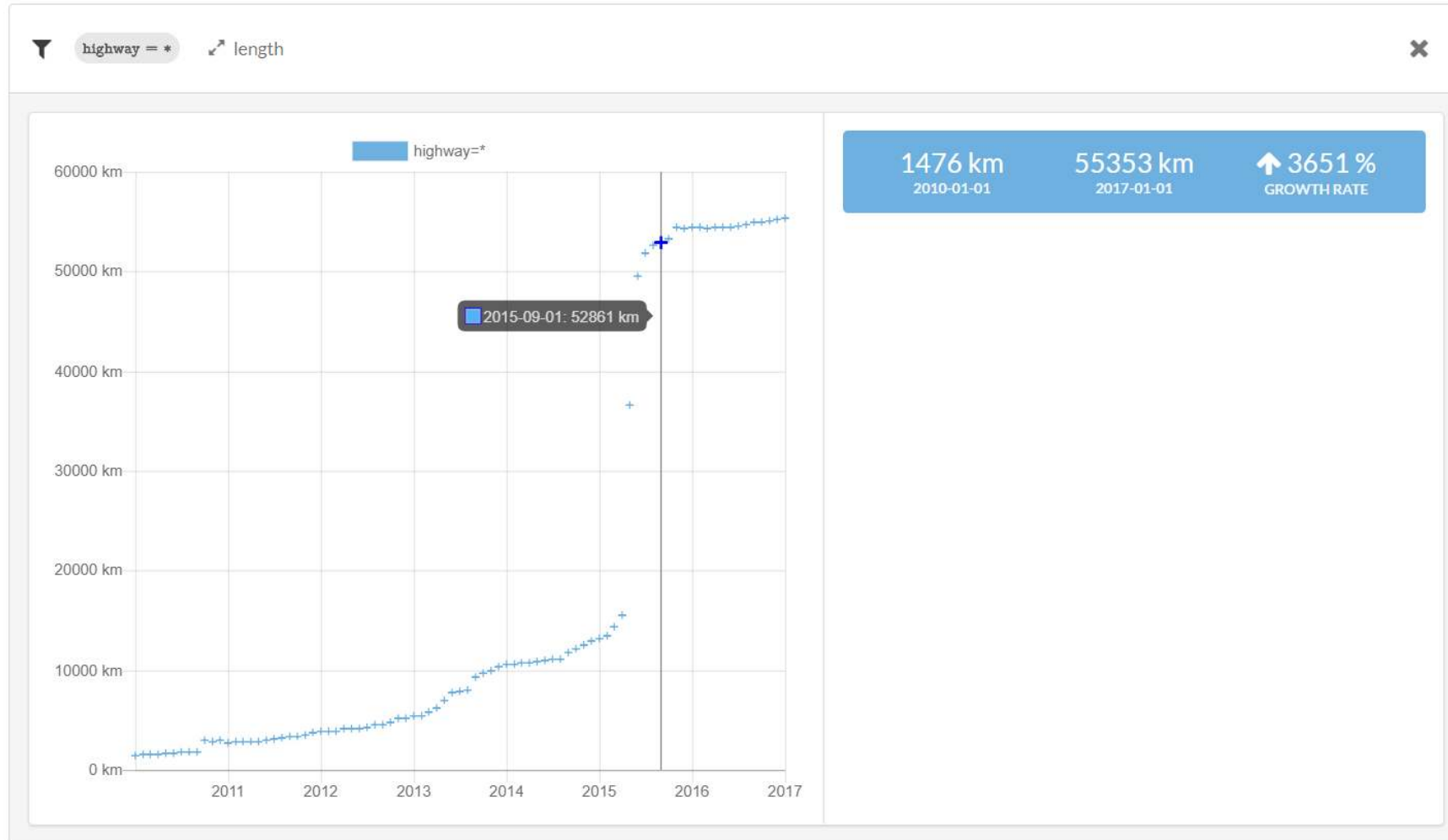
Area of interest



Selected areas:

<https://ohsome.org/apps/kll-dashboard-preview/>

Webapp using ohsome API: Nepal-Dashboard



The end

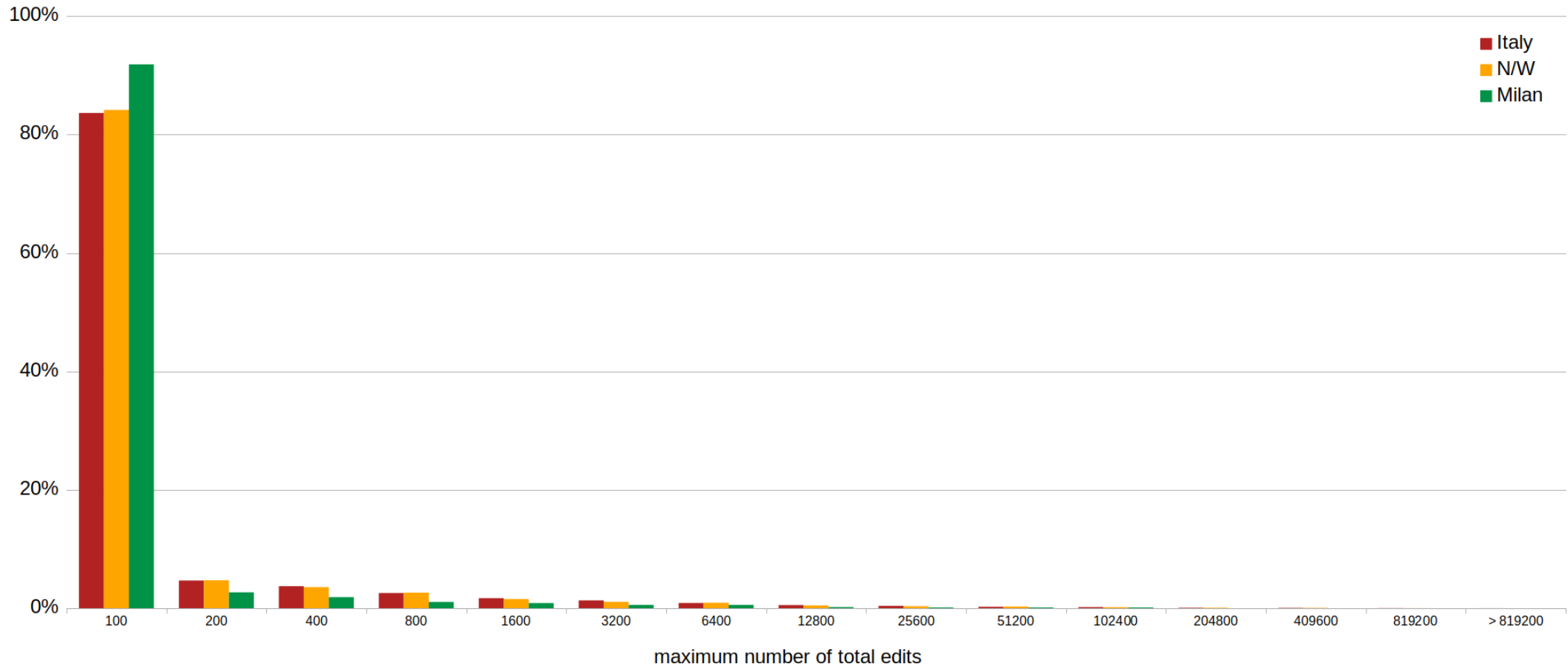
info@heigit.org

Thank you for your attention!

Workshop NOW!
Exploring OSM's history
using the "ohsome" data analysis platform
14:00h S.1.5

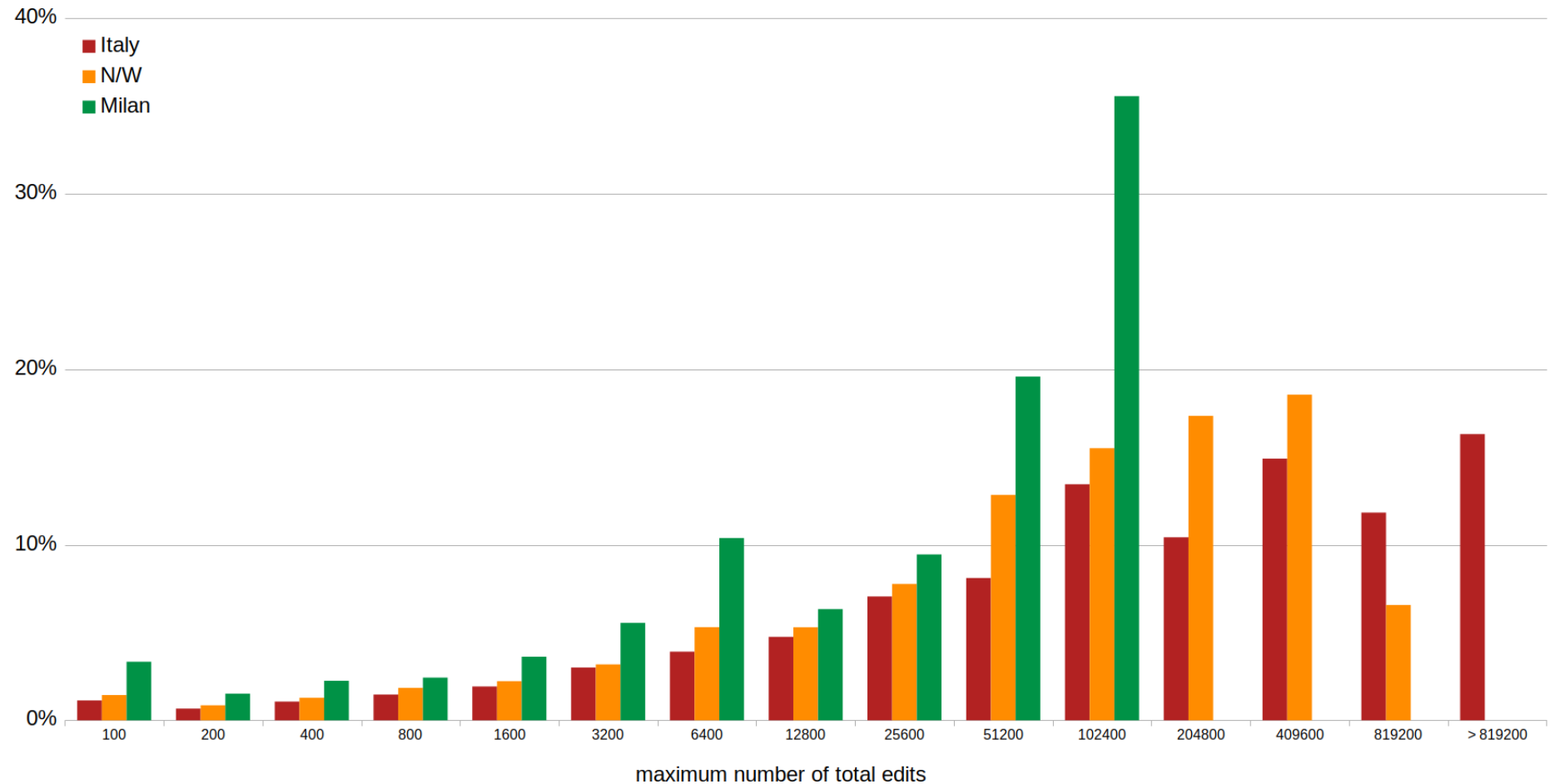
Examples: Community Dynamics

Relative Size of Mapper Groups



Examples: Community Dynamics

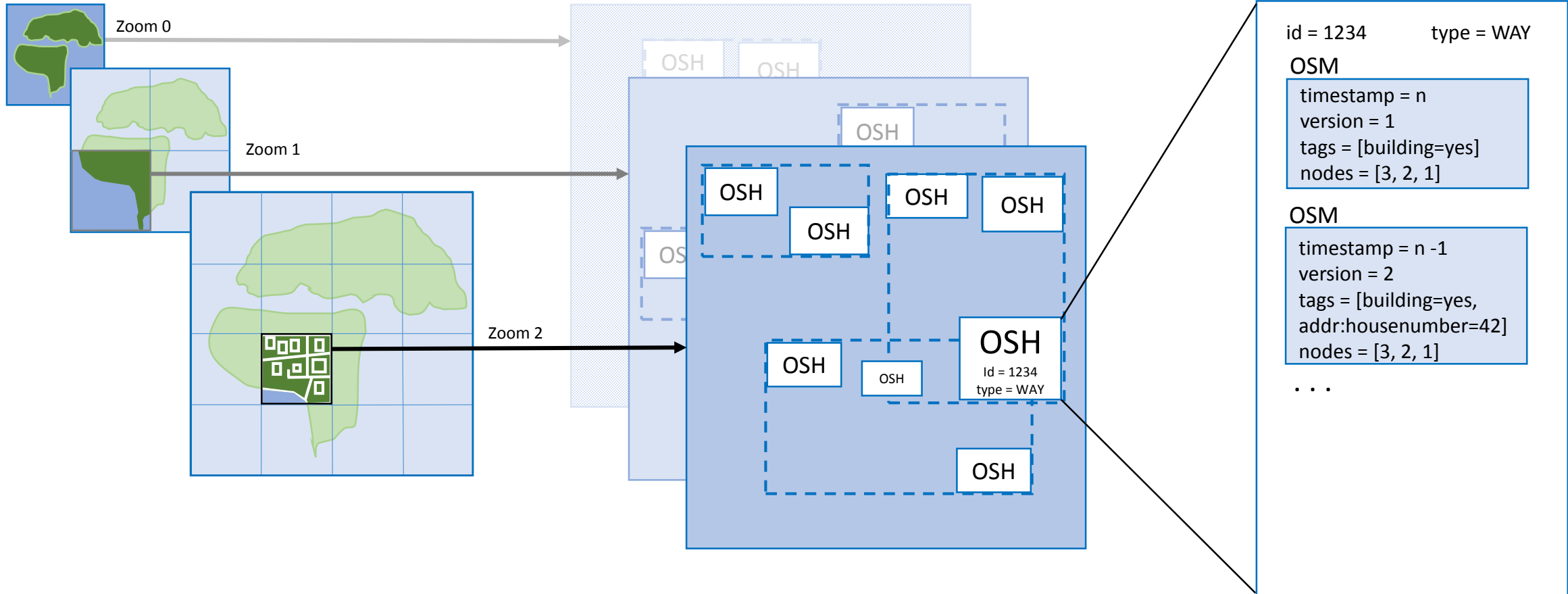
Proportion of Edits by Mapper Groups



Grid-Partitionierung der Welt
in gleich große Zellen

OSHWayGridCell enthält
OSHEntity Objekte in einem räumlichen Index

OSHEntity enthält
OSMEntity Objekte



UNIVERSITÄT
HEIDELBERG
ZUKUNFT
SEIT 1386



Klaus Tschira Stiftung
gemeinnützige GmbH



Grid-Partitionierung der Welt
in gleich große Zellen

OSHWayGridCell enthält
OSHEntity Objekte in einem räumlichen Index

OSHEntity enthält
OSMEntity Objekte

